

XU models

For a more precise control and enhancement of your sound, XU models of the MG Series come equipped with a suite of Yamaha's renowned SFX effects. Featuring high-resolution Chorus, Flanger, Distortions, Reverb and Delay, all with editable parameters, these are the same multi-effects processors used on Yamaha's high-end mixing consoles, giving you the tools you need to elevate your mixes to a higher plane.

MG10XU

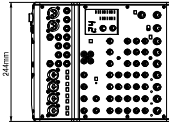


MG12XU



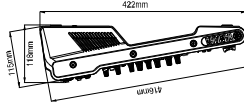
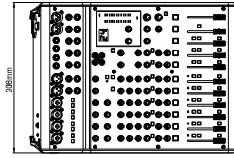
10-Channel Mixing Console

- Max. 4 Mic / 10 Line Inputs (4 mono + 3 stereo)
- 1 Stereo Bus ● 1 AUX (incl. FX)
- "D-PRE" mic preamps with an inverted Darlingtong circuit
- 1-Knob compressors
- High-grade effects: SPX with 24 programs
- 24-bit / 192kHz 2in / 2out USB Audio functions
- Works with the iPad (2 or later) through the Apple iPad Camera Connection Kit / Lightning to USB Camera Adapter
- Includes Cubase AI DAW software download version
- PAD switch on mono inputs ● +48V phantom power
- XLR balanced outputs ● Metal chassis



12-Channel Mixing Console

- Max. 6 Mic / 12 Line Inputs (4 mono + 4 stereo)
- 2 GROUP Buses + 1 Stereo Bus ● 2 AUX (incl. FX)
- "D-PRE" mic preamps with an inverted Darlingtong circuit
- 1-Knob compressors
- High-grade effects: SPX with 24 programs
- 24-bit / 192kHz 2in / 2out USB Audio functions
- Works with the iPad (2 or later) through the Apple iPad Camera Connection Kit / Lightning to USB Camera Adapter
- Includes Cubase AI DAW software download version
- PAD switch on mono inputs ● +48V phantom power
- XLR balanced outputs ● Internal universal power supply for world-wide use
- Optional Rack Mount Kit RK-MG12 Available ● Metal chassis

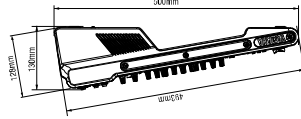
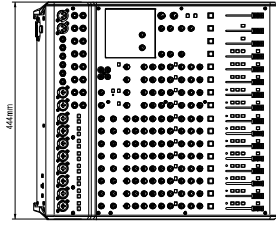


MG16XU



16-Channel Mixing Console

- Max. 10 Mic / 16 Line Inputs (6 mono + 4 stereo)
- 4 GROUP Buses + 1 Stereo Bus ● 4 AUX (incl. FX)
- "D-PRE" mic preamps with an inverted Darlingtong circuit
- 1-Knob compressors
- High-grade effects: SPX with 24 programs
- 24-bit / 192kHz 2in / 2out USB Audio functions
- Works with the iPad (2 or later) through the Apple iPad Camera Connection Kit / Lightning to USB Camera Adapter
- Includes Cubase AI DAW software download version
- PAD switch on mono inputs ● +48V phantom power
- XLR balanced outputs ● Internal universal power supply for world-wide use
- Rack Mount Kit Included ● Metal chassis

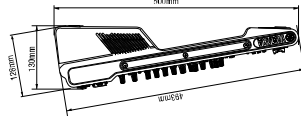
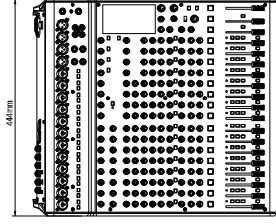


MG20XU



20-Channel Mixing Console

- Max. 16 Mic / 20 Line Inputs (12 mono + 4 stereo)
- 4 GROUP Buses + 1 Stereo Bus ● 4 AUX (incl. FX)
- "D-PRE" mic preamps with an inverted Darlingtong circuit
- 1-Knob compressors
- High-grade effects: SPX with 24 programs
- 24-bit / 192kHz 2in / 2out USB Audio functions
- Works with the iPad (2 or later) through the Apple iPad Camera Connection Kit / Lightning to USB Camera Adapter
- Includes Cubase AI DAW software download version
- PAD switch on mono inputs ● +48V phantom power
- XLR balanced outputs ● Internal universal power supply for world-wide use
- Rack Mount Kit Included ● Metal chassis



Standard Models

The third generation of the acclaimed MG Series, these compact mixing consoles focus on delivering high quality sound for a diverse range of mixing environments. With the same mic preamps as our high-end, professional mixers, the MG Series provides serious sound with the reliability and performance this series is renowned for.

MG10



MG12



MG16

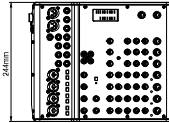


MG20



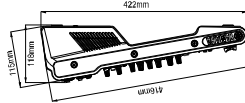
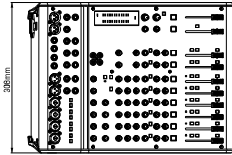
10-Channel Mixing Console

- Max. 4 Mic / 10 Line Inputs (4 mono + 3 stereo)
- 1 Stereo Bus ● 1 AUX (incl. FX)
- "D-PRE" mic preamps with an inverted Darlington circuit
- 1-Knob compressors ● PAD switch on mono inputs
- +48V phantom power ● XLR balanced outputs
- Metal chassis



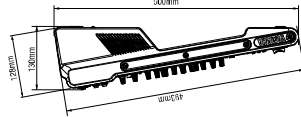
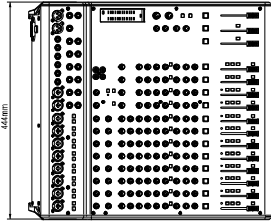
12-Channel Mixing Console

- Max. 6 Mic / 12 Line Inputs (4 mono + 4 stereo)
- 2 GROUP Buses + 1 Stereo Bus ● 2 AUX (incl. FX)
- "D-PRE" mic preamps with an inverted Darlington circuit
- 1-Knob compressors ● PAD switch on mono inputs
- +48V phantom power ● XLR balanced outputs
- Internal universal power supply for world-wide use
- Optional Rack Mount Kit (RK-MG12) Available ● Metal chassis



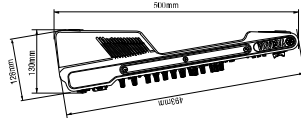
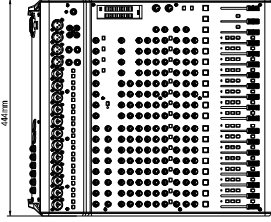
16-Channel Mixing Console

- Max. 10 Mic / 16 Line Inputs (8 mono + 4 stereo)
- 4 GROUP Buses + 1 Stereo Bus ● 4 AUX (incl. FX)
- "D-PRE" mic preamps with an inverted Darlington circuit
- 1-Knob compressors ● PAD switch on mono inputs
- +48V phantom power ● XLR balanced outputs
- Internal universal power supply for world-wide use
- Rack Mount Kit Included ● Metal chassis



20-Channel Mixing Console

- Max. 16 Mic / 20 Line Inputs (12 mono + 4 stereo)
- 4 GROUP Buses + 1 Stereo Bus ● 4 AUX (incl. FX)
- "D-PRE" mic preamps with an inverted Darlington circuit
- 1-Knob compressors ● PAD switch on mono inputs
- +48V phantom power ● XLR balanced outputs
- Internal universal power supply for world-wide use
- Rack Mount Kit Included ● Metal chassis



MG06 / MG06X

MG06



MG06X

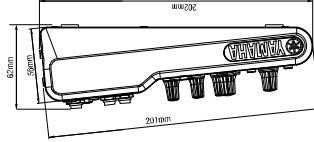
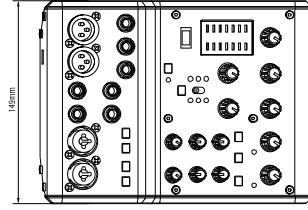
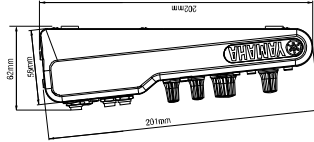
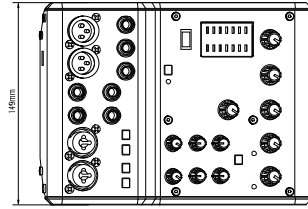


6-Channel Mixing Console

- Max. 2 Mic / 6 Line Inputs (2 mono + 2 stereo)
- 1 Stereo Bus
- "D-PRE" mic preamps with an inverted Darlington circuit
- XLR balanced outputs
- PAD switch on mono inputs
- +48V phantom power
- Metal chassis

6-Channel Mixing Console

- Max. 2 Mic / 6 Line Inputs (2 mono + 2 stereo)
- 1 Stereo Bus
- "D-PRE" mic preamps with an inverted Darlington circuit
- High-grade effects: SPX with 6 programs
- XLR balanced outputs
- PAD switch on mono inputs
- +48V phantom power
- Metal chassis



MG Series Specifications

General Specifications

	MG20XU / MG20	MG16XU / MG16	MG12XU / MG12
Frequency Response	Input to STEREO OUT +0.5 dB/-1.5 dB (20 Hz to 48 kHz), refer to the nominal output level @ 1 kHz, GAIN knob: Min	Input to STEREO OUT +0.5 dB/-1.5 dB (20 Hz to 48 kHz), refer to the nominal output level @ 1 kHz, GAIN knob: Min	Input to STEREO OUT +0.5 dB/-1.5 dB (20 Hz to 48 kHz), refer to the nominal output level @ 1 kHz, GAIN knob: Min
Total harmonic distortion (THD+N)	Input to STEREO OUT 0.03 % @ +14dBu (20 Hz to 20kHz), GAIN knob: Min 0.005 % @ +24dBu (1kHz), GAIN knob: Min	Input to STEREO OUT 0.02 % @ +14dBu (20 Hz to 20kHz), GAIN knob: Min 0.003 % @ +24dBu (1kHz), GAIN knob: Min	Input to STEREO OUT 0.02 % @ +14dBu (20 Hz to 20kHz), GAIN knob: Min 0.003 % @ +24dBu (1kHz), GAIN knob: Min
Hum&Noise *1	Equivalent Input Noise -128 dBu (Mono Input Channel, Rs: 150Ω, GAIN knob: Max)	Equivalent Input Noise -128 dBu (Mono Input Channel, Rs: 150Ω, GAIN knob: Max)	Equivalent Input Noise -128 dBu (Mono Input Channel, Rs: 150Ω, GAIN knob: Max)
Crosstalk(1 kHz) *2	Residual Output Noise -76 dB	Residual Output Noise -102 dBu (STEREO OUT, STEREO master fader: Min)	Residual Output Noise -102 dBu (STEREO OUT, STEREO LEVEL knob: Min)
Input channels	Mono[MIC/LINE] 4	Mono[MIC/LINE] 4	Mono[MIC/LINE]; 4, Stereo[LIN]; 3
Output channels	Mono/Stereo[MIC/LINE] 2	Mono/Stereo[MIC/LINE] 2	Mono[MIC/LINE]; 4, Stereo[LIN]; 3
Input channels	Stereo[LIN] 0	Stereo[LIN] 2	Stereo[LIN]; 2
Output channels	STEREO OUT 2	STEREO OUT 2	STEREO OUT; 2, PHONES; 1
Bus	MONITOR OUT 1	MONITOR OUT 1	MONITOR OUT; 1, AUX[FX] SEND; 1
Input Channel Function	PHONES 1	PHONES 1	PHONES 1
Level Meter	AUX SEND 4	AUX SEND 4	AUX SEND 4
Internal Digital Effect	GROUP OUT 4	GROUP OUT 4	GROUP OUT 4
Power Consumption	STEREO: 1, GROUP: 4, AUX: 4 (MG20XU: incl. FX) 26 dB	STEREO: 1, GROUP: 4, AUX: 4 (MG16XU: incl. FX) 26 dB	STEREO: 1, GROUP: 2, AUX: 2 (MG12XU: incl. FX) 26 dB
Dimensions (W x H x D)	PAD (Mono) HPF (Mono) COMP (Mono) EQ	PAD (Mono) HPF (Mono) COMP (Mono) EQ	PAD (Mono) HPF (Mono) COMP (Mono) EQ
Net Weight	1-knob compressor (Gain/Threshold/Ratio) Threshold: +22 dBu to -8 dBu, Ratio: 1:1 to 4:1, Output level: 0 dB to 7 dB Attack time: approx. 25 msec, Release time: approx. 300 msec	1-knob compressor (Gain/Threshold/Ratio) Threshold: +22 dBu to -8 dBu, Ratio: 1:1 to 4:1, Output level: 0 dB to 7 dB Attack time: approx. 25 msec, Release time: approx. 300 msec	1-knob compressor (Gain/Threshold/Ratio) Threshold: +22 dBu to -8 dBu, Ratio: 1:1 to 4:1, Output level: 0 dB to 7 dB Attack time: approx. 25 msec, Release time: approx. 300 msec
Included Accessory	HIGH Gain: +15 dB/-15 dB, Frequency: 10 kHz shelving	HIGH Gain: +15 dB/-15 dB, Frequency: 10 kHz shelving	HIGH Gain: +15 dB/-15 dB, Frequency: 10 kHz shelving
Operating Temperature	MID Gain: +15 dB/-15 dB, Frequency: Mono 250 Hz - 5 kHz peaking Stereo 2.5 kHz peaking	MID Gain: +15 dB/-15 dB, Frequency: Mono 250 Hz - 5 kHz peaking Stereo 2.5 kHz peaking	MID Gain: +15 dB/-15 dB, Frequency: Mono 250 Hz - 5 kHz peaking Stereo 2.5 kHz peaking
Optional Accessories	LOW Gain: +15 dB/-15 dB, Frequency: 100 Hz shelving	LOW Gain: +15 dB/-15 dB, Frequency: 100 Hz shelving	LOW Gain: +15 dB/-15 dB, Frequency: 100 Hz shelving
Phantom Power Voltage	PEAK LED (Mono) Pre Monitor LEVEL	PEAK LED (Mono) Pre Monitor LEVEL	PEAK LED (Mono) Pre Monitor LEVEL
Power Requirements	SPX algorithm 24 programs, PARAMETER control; FOOT SW: 1 (FX RTN CH on/off)	SPX algorithm 24 programs, PARAMETER control; FOOT SW: 1 (FX RTN CH on/off)	SPX algorithm 24 programs (MG10XU)
Dimensions (W x H x D)	2 IN / 2 OUT 24 programs, PARAMETER control; FOOT SW: 1 (FX RTN CH on/off)	2 IN / 2 OUT 24 programs, PARAMETER control; FOOT SW: 1 (FX RTN CH on/off)	2 IN / 2 OUT 24 programs (MG10XU)
Net Weight	USB Audio (XU Models) Phantom Power Voltage	USB Audio (XU Models) Phantom Power Voltage	USB Audio (MG10XU) Phantom Power Voltage
Included Accessory	Power Supply adaptor Power Consumption	Power Supply adaptor Power Consumption	Power Supply adaptor Power Consumption
Operating Temperature	Dimensions (W x H x D) Net Weight	Dimensions (W x H x D) Net Weight	Dimensions (W x H x D) Net Weight
Optional Accessories	Included Accessory	Included Accessory	Included Accessory
Phantom Power Voltage	Operating Temperature	Operating Temperature	Operating Temperature
Power Requirements	Power Consumption	Power Consumption	Power Consumption
Dimensions (W x H x D)	Dimensions (W x H x D)	Dimensions (W x H x D)	Dimensions (W x H x D)
Net Weight	Net Weight	Net Weight	Net Weight
Included Accessory	Included Accessory	Included Accessory	Included Accessory
Operating Temperature	Operating Temperature	Operating Temperature	Operating Temperature

0 dBu = 0.775 Vrms Output impedance of signal generator (Rs) = 150Ω

All level knobs are nominal if not specified.

*1 Noise is measured with A-weighting filter. *2 Crosstalk is measured with 1 kHz band pass filter.

	MG10XU / MG10	MG6XU / MG6
Frequency Response	Input to STEREO OUT +0.5 dB/-1.0 dB (20 Hz to 48 kHz), refer to the nominal output level @ 1 kHz, GAIN knob: Min	Input to STEREO OUT +0.5 dB/-0.5 dB (20 Hz to 20 kHz), refer to the nominal output level @ 1 kHz, GAIN knob: Min
Total harmonic distortion (THD+N)	Input to STEREO OUT 0.02 % @ +14dBu (20 Hz to 20kHz), GAIN knob: Min 0.003 % @ +24dBu (1kHz), GAIN knob: Min	Input to STEREO OUT 0.01 % @ +8dBu (20 Hz to 20kHz), GAIN knob: Min 0.003 % @ +18dBu (1kHz), GAIN knob: Min
Hum&Noise *1	Equivalent Input Noise -128 dBu (Mono Input Channel, Rs: 150Ω, GAIN knob: Max)	Equivalent Input Noise -128 dBu (Mono Input Channel, Rs: 150Ω, GAIN knob: Max)
Crosstalk(1 kHz) *2	Residual Output Noise -83 dB	Residual Output Noise -102 dBu (STEREO OUT, STEREO LEVEL knob: Min)
Input channels	Mono[MIC/LINE]; 4, Stereo[LIN]; 3	Mono[MIC/LINE]; 2, Stereo[LIN]; 2
Output channels	STEREO OUT; 2, PHONES; 1	STEREO OUT; 2, PHONES; 1
Bus	MONITOR OUT; 1, AUX[FX] SEND; 1	MONITOR OUT; 1, AUX[FX] SEND; 1
Input Channel Function	PHONES 1	PHONES 1
Level Meter	AUX SEND 4	AUX SEND 4
Internal Digital Effect	GROUP OUT 4	GROUP OUT 4
Dimensions (W x H x D)	PAD (Mono) HPF (Mono) COMP (Mono) EQ	PAD (Mono) HPF (Mono) COMP (Mono) EQ
Net Weight	1-knob compressor (Gain/Threshold/Ratio) Threshold: +22 dBu to -8 dBu, Ratio: 1:1 to 4:1, Output level: 0 dB to 7 dB Attack time: approx. 25 msec, Release time: approx. 300 msec	1-knob compressor (Gain/Threshold/Ratio) Threshold: +22 dBu to -8 dBu, Ratio: 1:1 to 4:1, Output level: 0 dB to 7 dB Attack time: approx. 25 msec, Release time: approx. 300 msec
Included Accessory	HIGH Gain: +15 dB/-15 dB, Frequency: 10 kHz shelving	HIGH Gain: +15 dB/-15 dB, Frequency: 10 kHz shelving
Operating Temperature	MID Gain: +15 dB/-15 dB, Frequency: Mono 250 Hz - 5 kHz peaking Stereo 2.5 kHz peaking	MID Gain: +15 dB/-15 dB, Frequency: Mono 250 Hz - 5 kHz peaking Stereo 2.5 kHz peaking
Optional Accessories	LOW Gain: +15 dB/-15 dB, Frequency: 100 Hz shelving	LOW Gain: +15 dB/-15 dB, Frequency: 100 Hz shelving
Phantom Power Voltage	PEAK LED (Mono) Pre Monitor LEVEL	PEAK LED (Mono) Pre Monitor LEVEL
Power Requirements	SPX algorithm 24 programs (MG10XU)	SPX algorithm 24 programs (MG06X)
Dimensions (W x H x D)	2 IN / 2 OUT 24 programs, PARAMETER control; FOOT SW: 1 (FX RTN CH on/off)	2 IN / 2 OUT 24 programs (MG10XU)
Net Weight	USB Audio (XU Models) Phantom Power Voltage	USB Audio (MG10XU) Phantom Power Voltage
Included Accessory	Power Supply adaptor Power Consumption	Power Supply adaptor Power Consumption
Operating Temperature	Dimensions (W x H x D) Net Weight	Dimensions (W x H x D) Net Weight
Optional Accessories	Included Accessory	Included Accessory
Phantom Power Voltage	Operating Temperature	Operating Temperature
Power Requirements	Power Consumption	Power Consumption
Dimensions (W x H x D)	Dimensions (W x H x D)	Dimensions (W x H x D)
Net Weight	Net Weight	Net Weight
Included Accessory	Included Accessory	Included Accessory
Operating Temperature	Operating Temperature	Operating Temperature

0 dBu = 0.775 Vrms Output impedance of signal generator (Rs) = 150Ω

All level knobs are nominal if not specified.

*1 Noise is measured with A-weighting filter. *2 Crosstalk is measured with 1 kHz band pass filter.